



TERRALOGOS  
eco architecture, pc

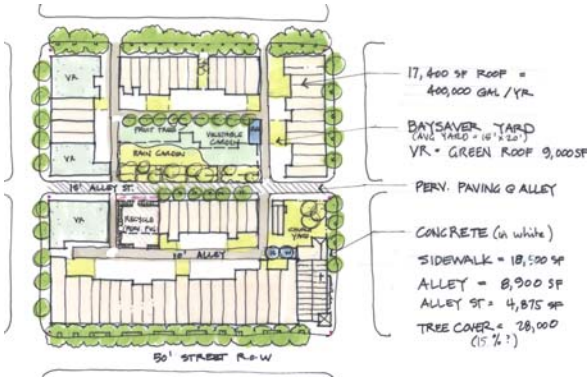
Principal in Charge:  
KIM SCHAEFER



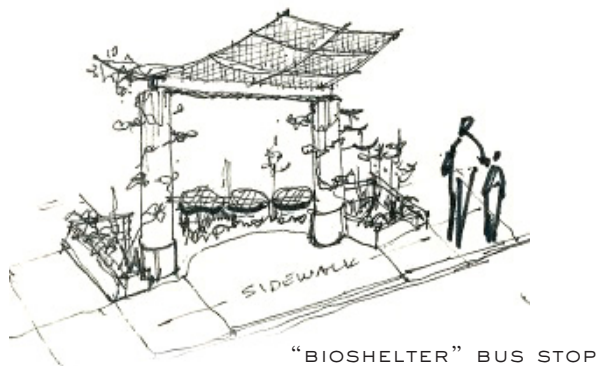
TYPICAL INNER BLOCK - 95% IMPERVIOUS PAVING



TOPIARY RAINWATER CATCHMENT TO DELIGHT AND EDUCATE PUBLIC ABOUT RAINWATER HARVESTING



SAMPLE GREEN BLOCK - IMPERVIOUS REDUCED TO 40%



"BIOSHILTER" BUS STOP

## Master Plan and Framework for Greening Watershed 263 BALTIMORE, MD

Watershed 263 is a 930 acre "stormshed" of underground pipes located in west Baltimore. TerraLogos developed a green strategy that creates an organizational structure and "skeleton" to enhance the ecological performance of the watershed and reduce stormwater runoff while building social capital in the neighborhood. The centerpiece of the Framework is the "Greenway" – a formal and informal path through the watershed that connects critical community spaces, such as schools and parks, cultural/historical sites, neighborhoods, and commercial centers through tree-lined and safe streets; features bio-retention gardens and vegetated roofs.

### ENVIRONMENTAL FEATURES

- "Greenway" and "Green Boulevards" to promote community activity and employment, improve the quality of the watershed, and create safer and cleaner neighborhoods.
- Vacant lot and community planting to reduce runoff and use for recycling centers.
- "Bioshelter" bus stops reduce runoff while adding artistic value
- Plans to reduce impermeable surfaces by up to 75% in housing blocks through use of vegetated roofs and bio-retention gardens
- Park grounds improvement with larger tree canopy, fewer impervious surfaces, enhanced community areas, and connecting parks and schools via the "Greenway" bike and pedestrian paths.

CLIENT: Parks and People Foundation  
 ARCHITECTS: TerraLogos: eco architecture, pc  
 Baltimore, MD  
 LOCATION: West Baltimore, MD  
 COST: N/A  
 COMPLETION: 20 year project