

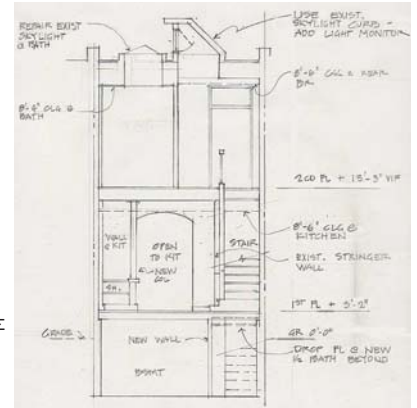


Principal in Charge:
KIM SCHAEFER

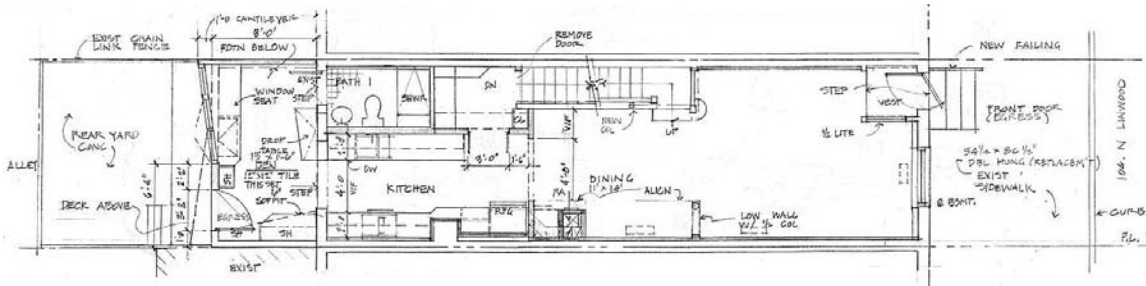
TERRALOGOS
eco architecture, pc



FRONT
EXTERIOR



SECTION
THRU HOUSE
SHOWING
"SLYLIGHT"
OVER STAIR



FIRST FLOOR PLAN

Green Rowhouse - Schaefer Residence BALTIMORE, MD

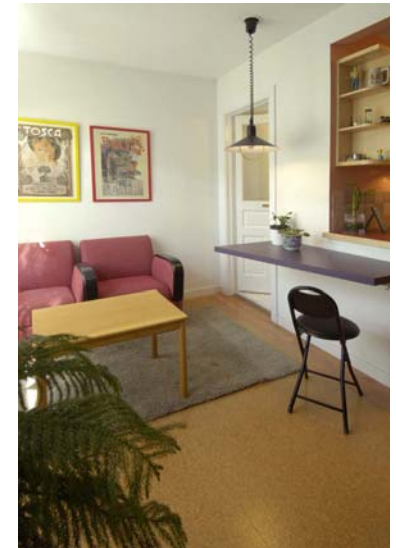
This house, in a vibrant East Baltimore rowhouse neighborhood, was renovated using the TerraLogos "medium green" standard for green rowhouse renovations. Extreme use of existing features such as hardwood floors, oak staircase and railing, salvage doors, and windows. The large 4' x 6' skylight over the stairway was replaced with an operable, vertical (clerestory) window for energy savings without sacrificing daylight.

ENVIRONMENTAL FEATURES

- Energy Star Home, 25% energy savings
- Create a healthy indoor environment and comfort
- Reduce resource consumption and water use
- Easy to operate and maintain



UPSTAIRS HALLWAY AND STUDY
NOOK + "SKYLIGHT"



SUNROOM REAR ADDITION

- CLIENT: Kim Schaefer
- ARCHITECTS: TerraLogos: eco architecture, pc
Baltimore, MD
- LOCATION: Patterson Park Neighborhood
Baltimore, MD
- COST: N/A
- COMPLETION: July 2002



MID-BLOCK ROWHOUSE IS
FLOODED WITH NATURAL
DAYLIGHT, SKYLIGHT
REPLACED WITH OPERABLE
CLERESTORY WINDOW